



22 Red Haven Dr

Grimsby, ON

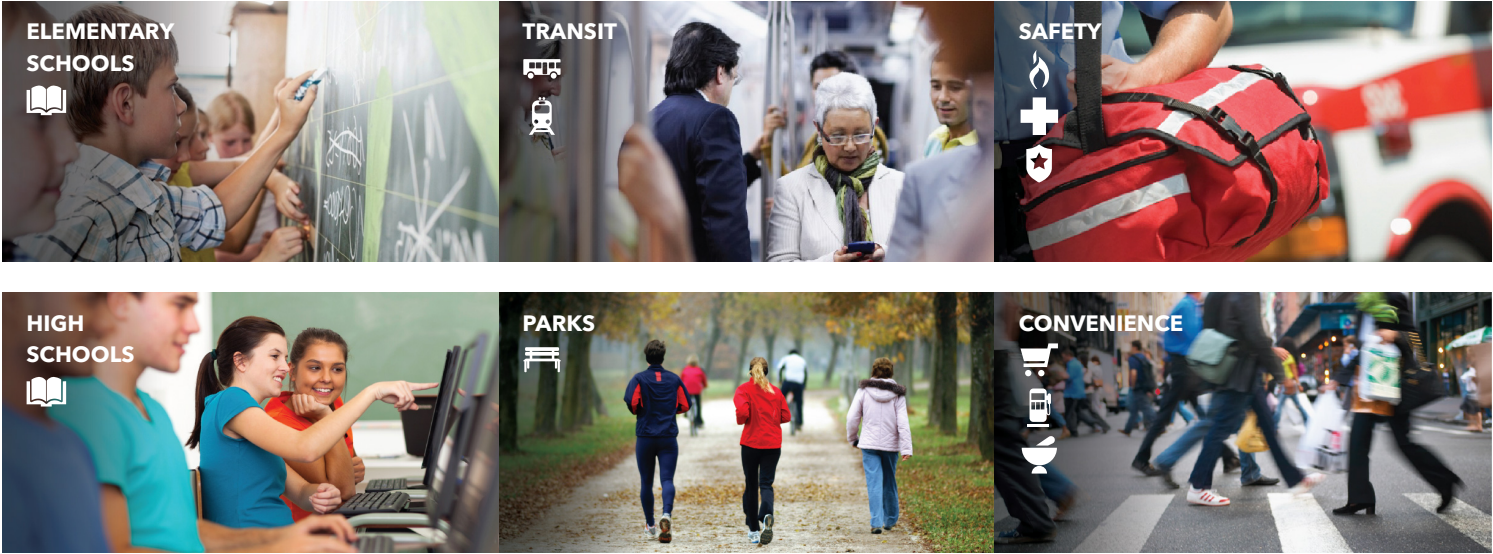
HOODQ DETAILED REPORT™

Mike Heddle | Broker

905.574.7441

TheHeddleGroup.ca



ROYAL LEPAGE | STATE REALTY



PUBLIC SCHOOLS (ASSIGNED)

Your neighbourhood is part of a community of Public Schools offering Elementary, Middle, and High School programming. See the closest Public Schools near you below:

Lakeview PS



about a 13 minute walk - 0.97 KM away

Pre-Kindergarten, Kindergarten, Elementary and Middle

33 Olive St, Grimsby, ON L3M 2B9, Canada

Originally built in 1959, with and addition in 1973, Lakeview has 400 students from Junior Kindergarten to Grade 8, and an educational team composed of Teachers, Principal, Vice Principal, Custodians, Educational Assistants, Lunch Supervisors, Administrative Assistants, a Youth Counsellor, and two Learning Resource Teachers. Our school proudly provides programs in literacy and numeracy, character education, the arts, social sciences, science, design and technology, and computers. Students participate in many experiences and opportunities which encourage the development of excellence, integrity, tolerance, respect, and a sense of social responsibility.

<http://lakeview.dsbni.org...>

| | |
|----------------------|---|
| Address | 33 Olive St, Grimsby, ON L3M 2B9, Canada |
| Language | English |
| Date Opened | 01-09-1969 |
| Grade Level | Pre-Kindergarten, Kindergarten, Elementary and Middle |
| School Type | Public |
| Phone Number | 905-945-5427 |
| School Board | DSB Niagara |
| School Number | 304921 |
| Grades Offered | PK to 8 |
| School Board Number | B66150 |
| District Description | London Regional Office |

Central French Immersion PS



about a 18 minute walk - 1.35 KM away

Elementary and Middle

10 Livingston Ave, Grimsby, ON L3M 1K7, Canada

We are pleased to provide an outstanding education at Central French Immersion Public School for our students. Innovative programs that meet the needs of all our students are taught by our dedicated and professional staff who care about your child. Our school provides extra-curricular opportunities that encourage the development of excellence, integrity and respect.

<http://central.dsbns.org...>

| | |
|-----------------------------|--|
| Address | 10 Livingston Ave, Grimsby, ON L3M 1K7, Canada |
| Language | English |
| Date Opened | 01-09-1969 |
| Grade Level | Elementary and Middle |
| School Type | Public |
| Phone Number | 905-945-5459 |
| School Board | DSB Niagara |
| School Number | 094978 |
| Grades Offered | 1 to 8 |
| Additional Details | French Immersion |
| School Board Number | B66150 |
| District Description | London Regional Office |

Grimsby SS

1.75 KM away

High

5 Boulton Ave, Grimsby, ON L3M 1H6, Canada

Grimsby Secondary School exudes excellence. Academics, sports, clubs, activities, community involvement, G.S.S. does it all. We can do it, because we have the best students and staff who challenge themselves to be the best they can be. Our motto, "semper paratus," (always ready) describes our approach to all challenges. The scholastic and athletic preparedness and success of our students is recognized at post secondary institutions throughout North America.

<http://grimsbyss.dsbns.org...>

| | |
|-----------------------------|--|
| Address | 5 Boulton Ave, Grimsby, ON L3M 1H6, Canada |
| Language | English |
| Date Opened | 01-09-1969 |
| Grade Level | High |
| School Type | Public |
| Phone Number | 905-945-5416 |
| School Board | DSB Niagara |
| School Number | 914517 |
| Grades Offered | 9 to 12 |
| Additional Details | French Immersion |
| School Board Number | B66150 |
| District Description | London Regional Office |

DSBN Academy

24.31 KM away

High and Middle

130 Louth St, St Catharines, ON L2S 2T4, Canada

At DSBN Academy, we share a common goal for each and every one of our students. We want our students to be prepared to distinguish themselves academically and be competitively eligible for admission to a college or university. Most importantly, we want them to graduate from college or university and we believe in our key strategies to supporting this vision.

<http://academy.dsbns.org...>

| | |
|-----------------------------|---|
| Address | 130 Louth St, St Catharines, ON L2S 2T4, Canada |
| Language | English |
| Date Opened | 02-09-2013 |
| Grade Level | High and Middle |
| School Type | Public |
| Phone Number | 905-684-8708 |
| School Board | DSB Niagara |
| School Number | 935455 |
| Grades Offered | 6 to 12 |
| School Board Number | B66150 |
| District Description | London Regional Office |

É Élé Renaissance

24.72 KM away

Pre-Kindergarten, Kindergarten and Elementary

1226 Lockhart Rd, Burlington, ON L7S 1H1, Canada

É Élé Renaissance est une école élémentaire de langue française du CSViamonde à Burlington.

<https://csviamonde.ca...>

| | |
|----------------------------|--|
| Address | 1226 Lockhart Rd, Burlington, ON L7S 1H1, Canada |
| Language | French |
| Grade Level | Pre-Kindergarten, Kindergarten and Elementary |
| School Type | Public |
| Phone Number | 905-637-3852 |
| School Board | CS Viamonde |
| School Number | 165425 |
| Grades Offered | PK to 6 |
| School Board Number | B66303 |

CATHOLIC SCHOOLS (ASSIGNED)

Your neighbourhood is part of a community of Catholic Schools offering Elementary, Middle, and High School programming. See the closest Catholic Schools near you below:

Our Lady of Fatima CS



about a 20 minute walk - 1.49 KM away

Pre-Kindergarten, Kindergarten, Elementary and Middle

69 Olive St, Grimsby, ON L3M 2C5, Canada

Our Lady of Fatima is as dynamic a faith community, dedicated to spiritual development, as it is a committed community of life long learners working together to meet diverse needs. We are one of two Catholic elementary schools located in Grimsby.

<https://schools.niagaracatholic.ca...>

| | |
|--------------------|--|
| Address | 69 Olive St, Grimsby, ON L3M 2C5, Canada |
| Language | English |
| Date Opened | 01-09-1969 |

| | |
|-----------------------------|---|
| Grade Level | Pre-Kindergarten, Kindergarten, Elementary and Middle |
| Orientation | Catholic |
| School Type | Public |
| Phone Number | 905-945-5500 |
| School Board | Niagara CDSB |
| School Number | 742155 |
| Grades Offered | PK to 8 |
| Additional Details | Religious |
| School Board Number | B67156 |
| District Description | London Regional Office |

Blessed Trinity Catholic SS

2.46 KM away

High

145 Livingston Ave, Grimsby, ON L3M 5J6, Canada

We are a Catholic secondary school serving the west end of the Niagara Catholic District School Board and offering programs from Grades 9 - 12. We celebrate the Gospel values as a foundation for our curriculum and co-instructional activities.

<https://www.blessedtrinitycatholic.com...>

| | |
|-----------------------------|---|
| Address | 145 Livingston Ave, Grimsby, ON L3M 5J6, Canada |
| Language | English |
| Date Opened | 01-09-1994 |
| Grade Level | High |
| Orientation | Catholic |
| School Type | Public |
| Phone Number | 905-945-6706 |
| School Board | Niagara CDSB |
| School Number | 690791 |
| Grades Offered | 9 to 12 |
| Additional Details | Religious and French Immersion |
| School Board Number | B67156 |
| District Description | London Regional Office |

ÉE Catholique Immaculée-Conception

25.13 KM away

Pre-Kindergarten, Kindergarten, Elementary and Middle

153 Church St, St. Catharines, ON L2R 3E2, Canada

Notre école accueille les élèves de la maternelle (4 ans) à la 8e année. Elle offre une éducation de qualité dans un environnement catholique de langue française. Notre communauté est très unie et impliquée, le personnel enseignant est dynamique et engagé.

<https://ic.cscmonavenir.ca...>

| | |
|----------------------|---|
| Address | 153 Church St, St. Catharines, ON L2R 3E2, Canada |
| Language | French |
| Date Opened | 01-09-1969 |
| Grade Level | Pre-Kindergarten, Kindergarten, Elementary and Middle |
| Orientation | Catholic |
| School Type | Public |
| Phone Number | 905-682-6732 |
| School Board | CS catholique MonAvenir |
| School Number | 722510 |

| | |
|-----------------------------|-----------------------------------|
| Grades Offered | PK to 8 |
| Additional Details | Before/After School and Religious |
| School Board Number | B67318 |
| District Description | Toronto and Area Regional Office |

ÉSC Saint-Jean-de-Brébeuf

32.93 KM away

High

620 River Rd, Welland, ON L3B 5N4, Canada

L'école secondaire catholique Saint-Jean-de-Brébeuf a été fondée en 1992 dans le but d'offrir à nos adolescents une chance équitable de poursuivre leurs études au palier secondaire dans un milieu de vie catholique francophone où ils auraient l'occasion d'affirmer leur appartenance à la collectivité franco-ontarienne.

<https://esjdb.cscmonavenir.ca...>

| | |
|-----------------------------|---|
| Address | 620 River Rd, Welland, ON L3B 5N4, Canada |
| Language | French |
| Date Opened | 01-09-1993 |
| Grade Level | High |
| Orientation | Catholic |
| School Type | Public |
| Phone Number | 905-714-7882 |
| School Board | CS catholique MonAvenir |
| School Number | 782017 |
| Grades Offered | 9 to 12 |
| Additional Details | Religious |
| School Board Number | B67318 |
| District Description | Toronto and Area Regional Office |

PRIVATE SCHOOLS

See a list of the closest private schools near you:

Trail Ridge Montessori School



about a 13 minute walk - 0.99 KM away

Great Lakes Christian High School

7.46 KM away

PARKS & REC.

Whether you want to sit at a park bench with a good book or use one of the special facilities offered, you'll be happy to know that your neighbourhood is close to many wonderful recreational opportunities. See Parks and Recreation facilities near you below:



Jeanette Ave Playground



about a 2 minute walk - 0.17 KM away

Jeanette Ave

1 Playground

<https://www.grimsby.ca...>



Forty Mile Creek Park about a 7 minute walk - 0.51 KM away

447 Elizabeth Street, Grimsby

Located at the end of Elizabeth St, where the 40 Mile Creek meets Lake Ontario, this park has lots to offer. The park has a large open space, a canoe/kayak launch, a large parking lot and is home of the 1812 BiCentennial Peace Gardens. This park is a popular destination for enjoying the waterfront, the gardens and the nearby trail. A lighthouse leading in to the Forans Marina makes this a popular photography location. The 40 Mile Creek side trail starts at this location, and connects up to the Bruce Trail. The historic Elizabeth St Pump house is also at this location, a popular destination for small weddings, family gatherings and other community rentals.

1 Trail, 1 Picnic Facilities, 1 Fishing, 1 Boating Facilities, and 1 Community Hall

<https://www.grimsby.ca...>



Nelles Lake Park about a 7 minute walk - 0.53 KM away

Nelles Rd N

This park offers a beautiful beach access that is easy to access, a large playground, a beach volleyball court, and a lot of open green space with shade. Parking is available onsite.

1 Playground, 1 Volleyball Court, and 1 Beach

<https://www.grimsby.ca...>



Debora Dr Playground about a 11 minute walk - 0.81 KM away

Debora Dr

1 Playground

<https://www.grimsby.ca...>

TRANSIT

The public transit system can be an easy, cost-effective and efficient way of getting around the city, accessible from your neighbourhood. See the closest Public Transit stops near you below:



The nearest rail transit stop is Grimsby about a 10 minute walk - 0.73 KM away

<https://www.viarail.ca...>



The nearest street-level transit stop is Casablanca Blvd. @ QEW Park & Ride

3.79 KM away

<https://www.gotransit.com...>

SAFETY

Every second matters in an emergency, and your neighbourhood is part of a dedicated safety system of emergency agencies including Fire Stations, Police Stations, and Hospitals. See the closest facilities near you below:



West Lincoln Memorial Hospital

WLMH has been providing exceptional care and service to over 65,000 residents of West Niagara since 1946. WLMH officially became a site of Hamilton Health Sciences in 2013 through amalgamation. On average each year, staff and physicians at WLMH care for more than: 25,000 individuals who visit the Emergency Department, 2,900 patients who are

admitted to the hospital, and 1,000 babies and moms. In addition, WLMH performs over 3,700 surgeries, of which 80 per cent are on an outpatient basis. WLMH is unique in its focus on integrating primary care.

1.44 KM away

| | |
|--------------|---|
| Type | Chronic Care, Emergency Care and General |
| Address | 169 Main St E, Grimsby, ON, L3M 1P3, Canada |
| Phone Number | 905-945-2253 |

<https://www.hamiltonhealthsciences.ca...>




The nearest fire station is Grimsby Fire Department - Station 1

0.66 KM away

| | |
|---------|---|
| Address | 261 Ontario St, Grimsby, ON L3M 5J2, Canada |
|---------|---|

<https://www.grimsby.ca...>



The nearest police facility is Niagara Regional Police Service - 8 District


0.42 KM away

| | |
|---------|-----------------------------------|
| Address | 45 Clarke St, Grimsby, ON L3M 3H3 |
|---------|-----------------------------------|

<https://www.niagarapolice.ca...>

CONVENIENCE


Being close to things you need every day makes life so much easier. See the conveniently located retailers near you below:



Food Basics

about a 15 minute walk - 1.1 KM away


| | |
|---------|---------------------------------|
| Address | 63 Main W, Grimsby, ON, L3M 4H1 |
|---------|---------------------------------|



Starbucks

4.1 KM away

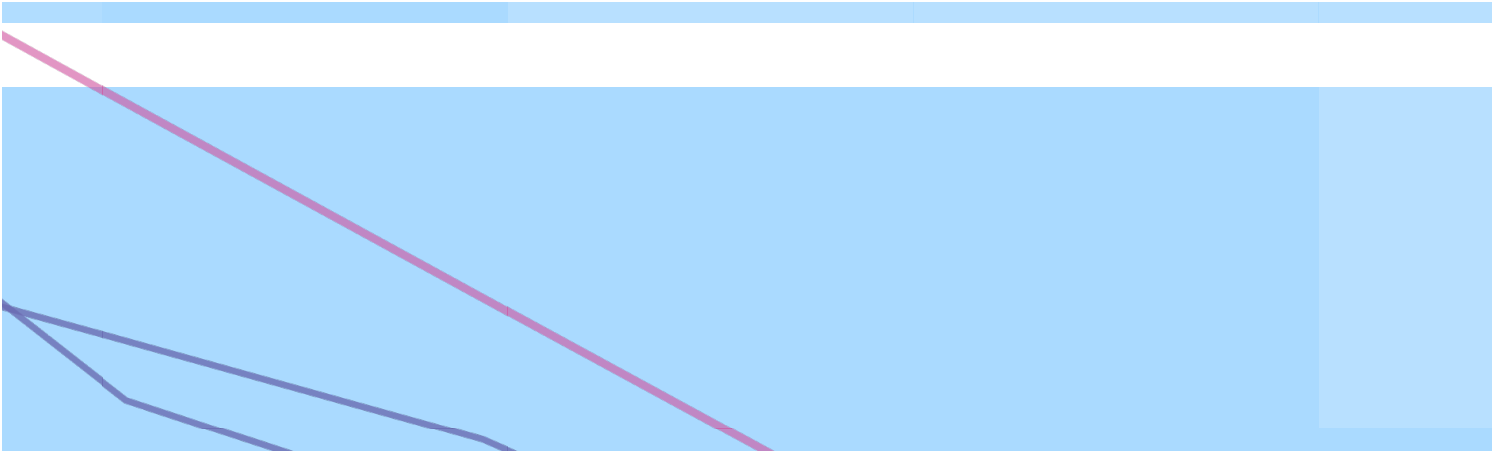
| | |
|---------|--|
| Address | 415 South Service Rd, Grimsby, ON, L3M 4E8 |
|---------|--|

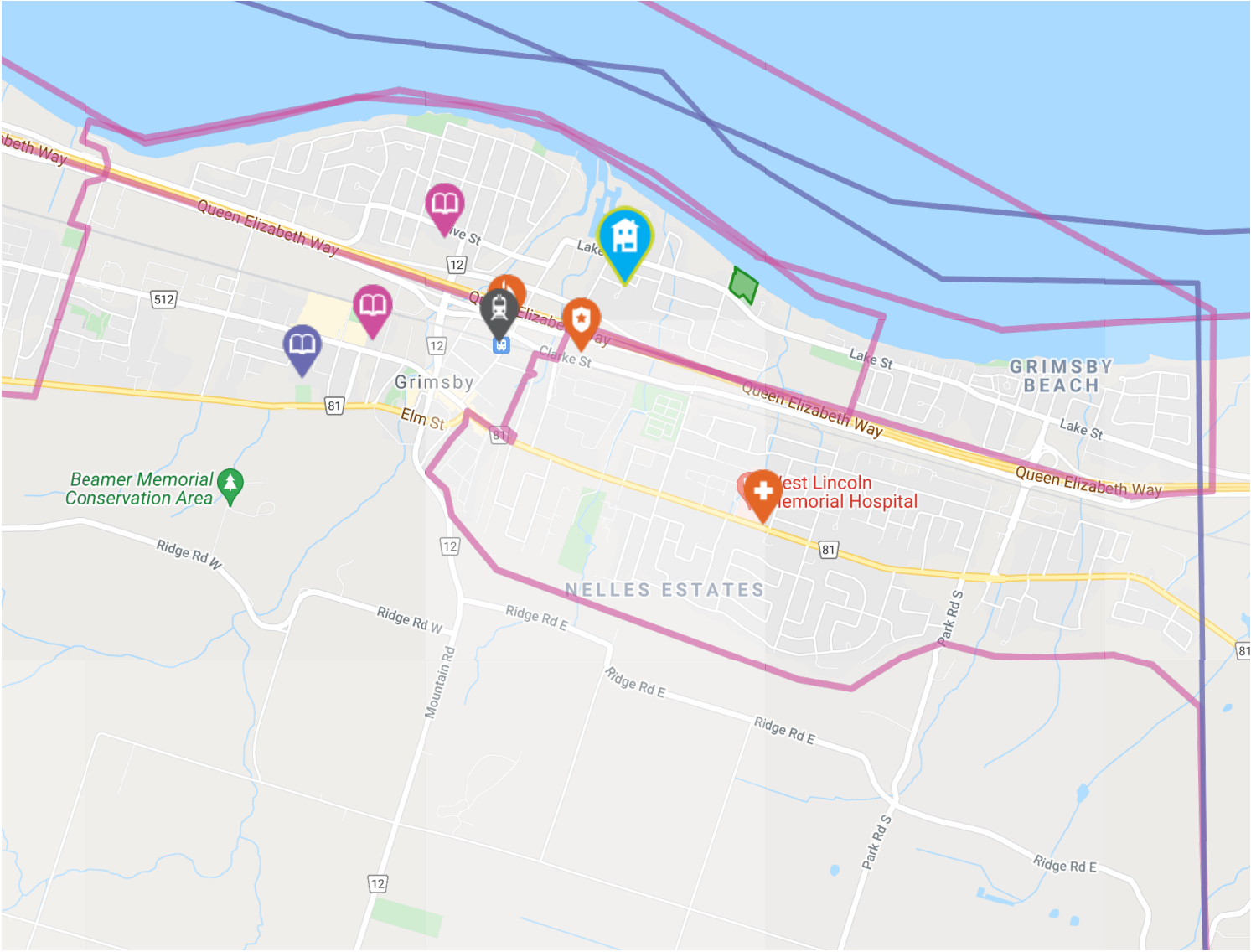


Curves

about a 13 minute walk - 1 KM away

| | |
|---------|--------------------------------------|
| Address | 4-37 Main St E, Grimsby, ON, L3M 1M7 |
|---------|--------------------------------------|





- | | | | | |
|----------------------------|------------------------|----------------------|---------|-------------|
| Elementary Schools | Middle Schools | High Schools | Transit | Safety |
| Elementary Attendance Zone | Middle Attendance Zone | High Attendance Zone | Parks | Convenience |

HoodQ

Disclaimer: These materials have been prepared for mikehuddle@royalpage.ca and are not intended to solicit buyers or sellers currently under contract with a brokerage. By accessing this information you have agreed to our terms of service, which are hereby incorporated by reference. This information may contain errors and omissions. You are not permitted to rely on the contents of this information and must take steps to independently verify its contents with the appropriate authorities (school boards, governments etc.). As a recipient of this information, you agree not to hold us, our licensors or the owners of the information liable for any damages, howsoever caused.